

KING PLOW ARTS CENTER FOR LEASE

887 W. Marietta Street, Unit M101 | Atlanta, GA 30318



ATLANTA LEASING
& INVESTMENT

ECONOMICS – For Lease

Total Project Size: 256,000 SF
12.5 Acres

Suites Currently Available: **Unit M101** (1,186 SF) \$2,570 /mo.

Rates include base year CAM, tax and insurance. Tenant pays utilities.

Parking Lot: Each leased unit includes one reserved space plus additional unreserved spaces (shared with other tenants at KPAC) for staff at no additional cost.



887 W. MARIETTA STREET, UNIT M101, ATLANTA GA, 30318

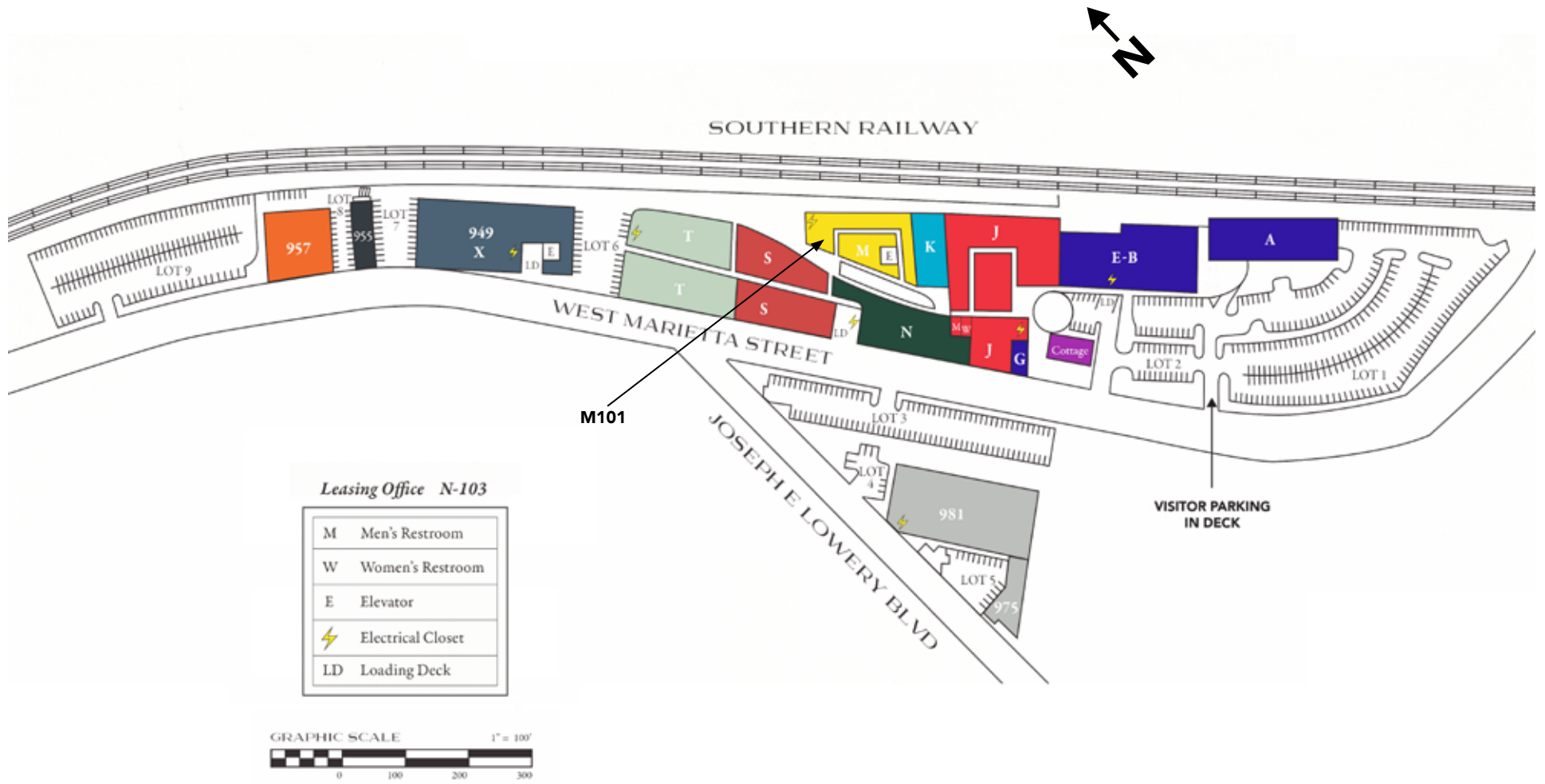
▶ 404.348.4448

▶ AtlantaLeasing.com/KingPlow



**ATLANTA LEASING
& INVESTMENT**

SITE PLAN



Leasing Office N-103

M	Men's Restroom
W	Women's Restroom
E	Elevator
⚡	Electrical Closet
LD	Loading Deck

M101

VISITOR PARKING IN DECK

PHOTOS Unit M101



887 W. MARIETTA STREET, UNIT M101, ATLANTA GA, 30318

▶ 404.348.4448

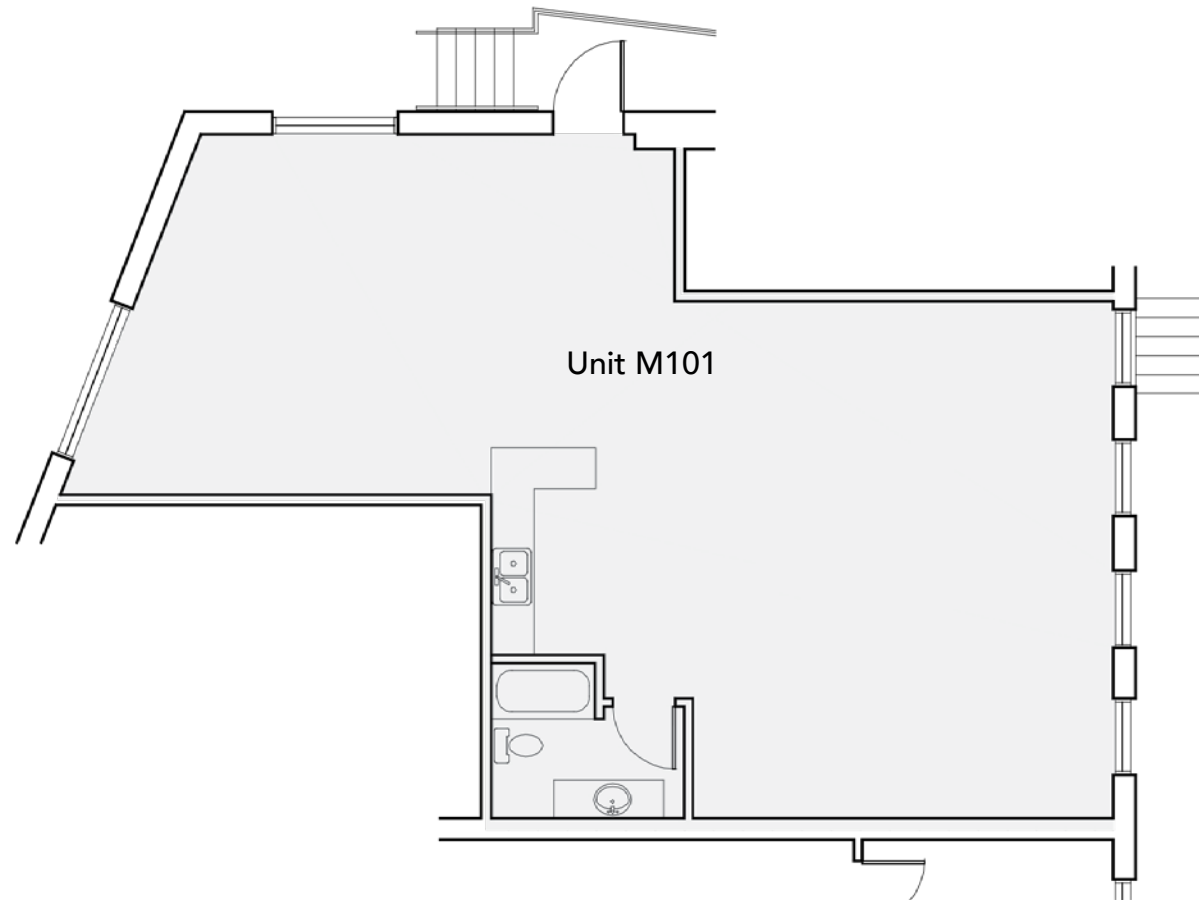
▶ AtlantaLeasing.com/KingPlow



ATLANTA LEASING
& INVESTMENT

FLOOR PLAN Unit M101

TOTAL: 1,186 SF



887 W. MARIETTA STREET, UNIT M101, ATLANTA GA, 30318

▶ 404.348.4448

▶ AtlantaLeasing.com/KingPlow



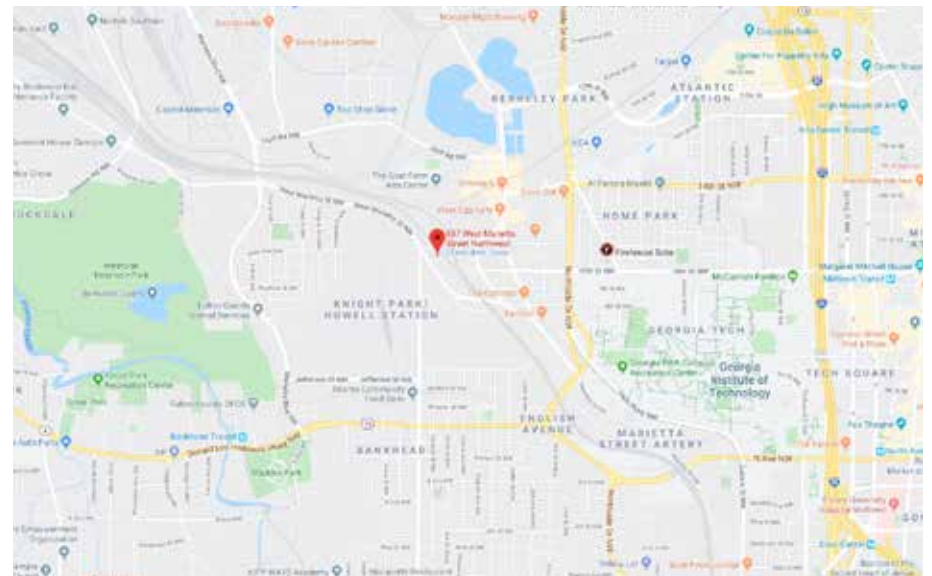
**ATLANTA LEASING
& INVESTMENT**

PROPERTY DETAILS

- Historic building with great tenant mix and synergy amongst tenants
- Exposed brick with large windows and skylights
- Welcoming and comfortable atmosphere inside the space
- Looking outward towards Marietta St
- Fantastic area amenities including top-tier Atlanta restaurants and entertainment
- 220 total parking spaces in the development
- Employee parking cards available for the parking garage and surface lot

Great Co-Tenants:

Ballroom Dance Club of Atlanta
Entertainment Property Law
Paul Mitchell School
Radix Health
Bold American Events



887 W. MARIETTA STREET, UNIT M101, ATLANTA GA, 30318

▶ 404.348.4448

▶ AtlantaLeasing.com/KingPlow



**ATLANTA LEASING
& INVESTMENT**